

# THE GRAPEVINE

## Supporting Victims of Child Abuse in Jersey

For the last two months, care leavers throughout the UK and around the world will have been horrified to follow the news about what has been happening on the isle of Jersey.

Police have been investigating the abuse of children in care at the Haut de la Garenne children's home, mainly in the 1970s and 1980s. To date, 160 people have come forward, saying that they were abused in care, either at that home or at others on Jersey. There are now 40 people who are accused of committing child abuse.

From the police investigation, it is clear that this abuse was widespread and was covered up for decades. This follows a pattern that we are all familiar with from abuse investigations in the UK. The North Wales Inquiry (2000) and the abuse scandals in Staffordshire and Leicester in the 1990s all showed that abuse in the care system is often covered up by people not believing children in care when they make complaints. The police, social workers and others have a history of not believing such claims, as the police themselves admitted in a report into such cases.

With the Jersey case, the CLA are keen to help those who were in care on Jersey to make sure that they get justice. We have done a number of things in the past two months to try to help make this happen:

- Informed the media about the views of care leavers on past abuse and how it should be dealt with.
- Promoted and got mentioned in a parliamentary statement in which M.P.s of all political parties condemned the abuse and supported the CLA's call for a public inquiry into abuse in the care system in both Jersey and the UK
- Put up bulletins on Jersey on our website
- Sent a statement of our support for the care leavers on Jersey which was read out at a public demonstration in the Jersey capital, St Helier.
- Arranged a meeting on Jersey, so that all care leavers and all the abuse victims can come together to help each other.

The meeting on Jersey will be taking place on the 30th of April. Will McMahon (Chair), Mary Clear (Treasurer) and Jim Goddard (Secretary) will be going over to Jersey. We have had help setting up the meeting from Senator Stuart Syvret, one of the two whistleblowers on the island, who has found us a venue. We hope to meet as many victims as possible. We will help them to set up their own Jersey Care Leavers Association, if they want to. Whatever they decide to do, we are committed to helping them over the next few years, as all these abuse cases come to trial and enquiries and reforms begin.



There are already lots of people on Jersey downplaying the abuse and the issues it raises, partly because of concerns about the effect on tourism to Jersey. We will help the victims of the abuse to make sure that this issue is taken as seriously as it needs to be.

When we come back, we will also be arranging meetings in the UK. We need to create a group, including MPs, other pressure groups and anyone who knows how important this is and wants to help. Another meeting we need to arrange is for care leavers in the UK who were in care on Jersey in the past. They, too, need to be able to have their say.

We will be reporting back on our Jersey visit at the CLA meeting in London on 10th May. If you want to be part of that meeting and to help us in our work to ensure justice for the care leavers on Jersey, then do come along to that meeting.

*The Grapevine is published by the Care Leavers Association, which is not responsible for any articles submitted, their content, or omissions and which reserves the right to edit or withhold any materials submitted for publication. Reproduction of this newsletter in any manner is not permitted without the prior written consent of the publishers.*

# CONTENTS

## REGULARS

Page 1 - Recent Meetings

Page 2 - News and Updates

Page 3 - NDW Comment

Page 5 - Get Involved

## FEATURES

Front Cover - CLA and Jersey

Page 3 -

Page 4 - Trying to Find...

Page 4 - Speaking Out

## GET IN TOUCH!

If you would like to comment on anything you have read in *The Grapevine*, or if you would like to submit a story or article yourself, then contact us:

By Post: Care Leavers' Association, Suite F113, 23 New Mount Street, Manchester, M4 4DE

By Email: [grapevine@careleavers.com](mailto:grapevine@careleavers.com)

General enquiries: 0161 953 4047 or email, [info@careleavers.com](mailto:info@careleavers.com)



**CLA Merchandise Now Available!**  
You can buy CLA mugs, fridge magnets and pin badges online now [here](#)



## Recent Meetings

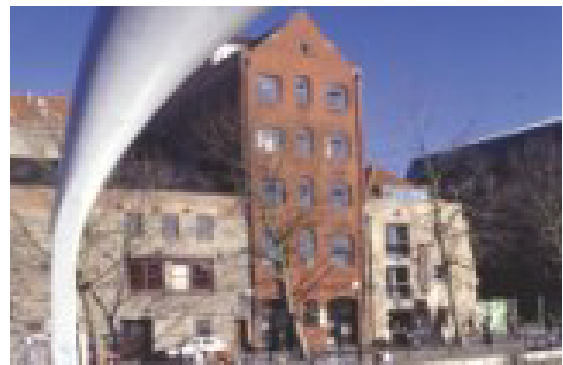
### Campaign Meeting in Bristol

**April 2008**

On Saturday 5th April 2008, we took the '[It's Our Histor. It's our Right: Reclaiming Our Past](#)' campaign to Bristol.

We met at the Bristol Youth Hostel Association (pictured opposite). The morning session was an Executive Committee meeting, to allow us to deal with all the management issues, such as fundraising, policy development and strategic planning.

The afternoon session was open to all care leavers and we publicised this to the local media, local voluntary groups and local radio (see story on page 4).



Several new care leavers turned up and we had a good meeting. Jim gave his top ten tips on accessing records and we watched the dvd of Mary speaking about accessing her own file. We also had plenty of time for people to chat and get to know one another, as well as to get help with their individual files.

### Next Meeting:

**10th May 2008, 3pm-5pm**  
University of London Union, Malet Street  
London, WC1E 7HY  
([map](#))

# NEWS & UPDATES

## Media Round-Up

(To read any story on full, click on its title)

25/04/2008 [Guardian: Education gap widening for children in care](#). New figures reveal a widening gap in terms of achievement at GCSE level between children in care and their peers.

23/04/2008 [Guardian: 400 children trafficked from care](#). *The Guardian* reports on the foreign children who have been going missing from local authority care over the last few years.

15/04/2008 [The Sun: Rapist preyed on foster kids](#). *The Sun* reports on the care worker who trawled a council's database to prey on young girls.

13/04/2008 [BBC: Sensitive data lost by councils](#). It is revealed that 13 London councils lost or wrongly revealed sensitive data last year, including that of children from care.

25/03/2008 [Jim Goddard talks to the BBC](#) about the CLA's plans to support victims of the care system in Jersey.

As a charity, a lot of the CLA's work depends on the contributions and fund-raising activities of its supporters. There are lots of ways you could help:

Coffee mornings  
Sponsored events  
Ebay for Charity

To find out more, click [here](#) or [Contact Us](#)

## We've Moved!

Put our new contact details in your address book:

Suite F113  
23 New Mount Street  
Manchester  
M4 4DE

Tel: 0161 953 4047  
[Info@careleavers.com](mailto:Info@careleavers.com)

The CLA [website](#) received over 60,000 hits in March

Your top pages were:

1. [Forum](#)
2. [Newsletter Extra](#)
3. [Policies](#)
4. [Newsletter Archive](#)

**CareleaversReunited** is growing all the time. We currently have 3048 users and 1196 homes.

Haven't logged on recently? Do so now!

[www.careleaversreunited.org](http://www.careleaversreunited.org)

## 2008 MEETING DATES - FOR YOUR DIARY

10th May - London  
7th June - Glasgow  
12th July - TBC

4th October - TBC  
1st November - Manchester (AGM)

Meetings will be held between 3-5pm. Keep an eye on the website home page for more information. If you would like venue details for any meeting please contact the office

0161 275 9500 [info@careleavers.org](mailto:info@careleavers.org)

# NEWS & UPDATES

## NDW Comment

**Victoria Hull, the CLA's National Development Worker gives us a quick run-down of what she's been up to in the last month**

Hi everyone,

We've now settled into our new office, which is still in central Manchester and you can find our new contact details of page 1 of this newsletter.

The past month or so have, again, been a busy time for the CLA. As well as the office move, we have held campaign meetings in Leeds and Bristol and I am now busy preparing for our may meeting in London. That's open to all care leavers, so if you're interested, do come along and join us. Its a very informal atmosphere and you can bring a friend along with you if you prefer.

As you will see from the front page, we have been occupied with the ongoing case in Jersey over the last two months and we have been carefully considering how we can offer support and advice to care leavers over there. Will Jim and Mary will visit Jersey later this month in order to discuss this further.

I have spent quite a lot of time organising the office move and setting up the new office. I have also been busy continuing our fundraising efforts. We were lucky enough to have a successful bid with Esmee Fairbairn at the end of last year, which will provide core funding until July 2011. However, we still have to work hard on other project bids so that we can continue to

grow our work and reach out to even more care leavers. Along with one of our volunteers, I am working on a sponsorship event that will take place in the summer - watch out for more info on that!

I have also delivered several presentations this month, one in Nottingham to the Social Policy Association and the other to a charity in Stockport, which supports young people from care through education, employment and training.

In addition to that I have been preparing for the Access to Records week that we plan to launch in June (see page 4 for more details).

Remember, if you have stories or articles for *The Grapevine*, send them to [grapevine@careleavers.com](mailto:grapevine@careleavers.com)

**Victoria Hull, National Development Worker**



**Would you like to come to a CLA meeting, but find them too far to travel to?**

If there is a big town near you, that you think would be a good place for a meeting, let us know. If we get enough interest in an area we can look into arranging a local meeting.



**Barnardo's Home, Hollywood Road  
Belfast c. 1935**

This photo was sent in by a member of [CareleaversReunited](#). To see other children's home photos click [here](#). If you have a photo you would like to send us, email: [info@careleavers.com](mailto:info@careleavers.com)



## Trying To Find...

### Lorna:

'Looking for other teenagers who lived at FGH 29 and FGH 31 Manchester, Gloucester House in Lower Broughton, Salford and Glendene, Greenbrow Road, Wythenshawe between 1979-1984.

### Bobby:

Looking for people who lived at St Gabriel's Convent, Knoll Park, Woolton, Liverpool from 1967 -1970.

Do you want to contact anyone from this column? Contact us to pass a message on.

Do you want to put a notice in this column? Contact us:

Grapevine@careleavers.com  
0161 953 4047

## *It's Our History, It's Our Right: Reclaiming Our Past'*

### Campaign Update

The CLA's campaign to raise awareness about care leavers' rights to access their records and provide them with support and information on how to do so has been going strong through the first quarter of 2008.

We have visited two different cities, Leeds and Bristol, already and will be visiting London on the 10th May to meet with care leavers who are interested in this issue and to provide guidance for anyone looking to access their files, as well as the opportunity for people who have accessed them, or tried to, already to come and talk about their experiences.

In June, we'll be taking the campaign a step further by launching a National Access to Records Week. The aim of the week will be to publicise the fact that care leavers can access their files, if they still exist and to raise awareness amongst professional and the public about how important these files can be.

During the week, we will be encouraging our supporters to write to their local MPs, we will be launching an access to records kite-mark for local authorities and publishing the results of our research into local authority practice in this area.

Please [contact us](#) if you would like more info.

# Speaking Out

## David Wood takes the CLA onto the airwaves

CLA Exec member, David Wood, has been very busy this month publicising the work of the CLA on the radio.

David has been a member of the CLA for several years, a member of the Exec since November and has been campaigning personally on access to records for a long time.

During April, David has spoken on various radio shows to highlight the work of the CLA, the needs of adult care leavers and, in particular the CLA's current Access to Records campaign: '[It's Our History, It's Our Right: Reclaiming Our Past'](#).

David was spurred on by our campaign meeting in Bristol at the beginning of April and contacted a number of local radio stations in the area. He got a great response and was interviewed on



Bristol Community Radio, BBC Radio Bristol, Original 106.5fm and GWR Bristol. He's got more interviews in the pipeline too!

David is going to write about his experience on the air for a future edition of the Grapevine, so keep a look out for that.

He is pictured above, talking to Ali Vowels at BBC Bristol.

# Get Involved!

We know that all people have different interests and want to be involved in CLA in different ways. Some people are more interested in newsletters than meetings, some people want to help fundraise and others might want to share their stories.

Fill in this short form, send it back to us and let us know what your interests are!

Name:

Town:

Contact details:

<input type="checkbox"/>	<b>I would like to be a local contact</b>
<input type="checkbox"/>	<b>I would like to volunteer for the CLA</b>
<input type="checkbox"/>	<b>I would like to give out leaflets</b>
<input type="checkbox"/>	<b>I would like to write for the newsletter</b>
<input type="checkbox"/>	<b>I can help to organise a fundraising event</b>
<input type="checkbox"/>	<b>I have skills to offer a small campaigning organisation</b>
<input type="checkbox"/>	<b>I would like to come to meetings</b>
<input type="checkbox"/>	<b>I would like to make a donation (please see below for details)</b>
<input type="checkbox"/>	<b>I would like to take part in a 'history of care' project</b>

.....

If you simply don't have the time to get actively involved in the CLA, but you still want to support our work, you could think about making a donation.

All donations will go towards helping the CLA to keep going and to running our projects and campaigns. Here are some of the ways your donation could help:

- £5** Will pay for one info pack for schools and colleges
- £10** Will keep our little printer going for 1 month
- £20** Will keep the telephone line going for a month
- £50** Will hire a room for a local meeting
- £100** Will buy 1000 campaign leaflets
- £400** Will enable us to send an Access to Records Guide to every Social Services department in the country, to help towards building good practice in this area.

There are lots of ways that you can make a donation:

- Standing Order (see page 9 for details)
- Online through our [Justgiving](#) page,
- Through the post

Whatever you choose to donate, whether £2 or £200, will be a great help and will go towards providing services for care leavers, running our projects and working for change to the current system.

# Why Not Become a Member?

Any care leaver, over the age of 18, can be a member of the CLA. Non-care leavers and organisations can also join as supporters. It's simple, just fill in the form below and return it to us.

<b>Your Personal Details:</b>	<b>Telephone:</b> .....
<b>Title:</b> Mr/Mrs/Ms/Miss/Other:.....	<b>Email :</b> .....
<b>Forename:</b> .....	<b>Profession:</b> .....
<b>Surname:</b> .....	<b>Where did you hear about us?</b> .....
<b>Address:</b> .....	.....
..... <b>Postcode:</b>	<b>Date of Birth:</b> .....
<input type="checkbox"/> The CLA will keep in touch with you with newsletters & other information about our work. Please tick if you do <b>NOT</b> want to receive this.	

<b>Annual Membership (please tick the category that applies to you):</b>
<input type="checkbox"/> <b>Full Member (care leaver waged/unwaged): £5/£2</b>
<input type="checkbox"/> <b>Individual Supporter: £25</b> (someone who supports our work but is not a care leaver)
<input type="checkbox"/> <b>Group Supporter: £50</b>
<input type="checkbox"/> <b>I am a care leaver. I can't afford the membership fee, but still want to join the CLA</b>
<b>I wish to make an additional donation of £</b> .....
<b>Total payment enclosed £</b> .....

The CLA keeps membership fees for care leavers low on purpose, to make it easy for any care leaver to join. However, as a charity, we do need funds to keep running. If you do feel that you can pay for membership, that's great. If you would like to make a further donation, whatever you feel you can give will be a great help.

If you want to set up a standing order so that your membership fee is paid automatically each year, or if you want to set up a standing order donation, you can use the form below.

<b>Standing Order Membership</b>
Donating to the CLA by standing order is a great way to give regular support. It helps us to budget more effectively and cuts down on our administrative costs. This gives us more time to devote to our projects, services and campaigns. Just a small amount per month can make a real difference.
I would like to make a <b>monthly/quarterly/annual</b> gift of £.....
<b>Please provide your bank details below:</b>
<b>To the manager of</b> ..... <b>Bank,</b>
<b>Bank Address</b> .....
..... <b>Sort code</b> ..... <b>A/c No</b> .....
Please pay the above amount to: Care Leavers' Association, A/c No 65095940, at The Co-operative bank Plc (08-92-99), Kings Valley, Yew Street, Stockport, Cheshire, SK4 2JU
<b>Start date:</b> ..... <b>Signed:</b> ..... <b>Date:</b> .....

**Gift Aid Declaration**  
Please tick the box above if you would like the CLA to reclaim the tax that you have paid on your donations to us since 30<sup>th</sup> November 2005 and on any future donations.  
NB: You must have paid an amount of income and/or capital gains tax (in the UK) equal to the tax that will be claimed (currently 25p for every £1 you give)

**Thank you for your support.**

Please return this form to: Care Leavers' Association, Suite F113, 23 New Mount Street, Manchester M4 4DE